

Corporate Rate

* Price stated in Ringgit Malaysia (RM)

Activity	Corporate / Commercial Event		
	Per hour	4 hours	8 hours
Studio 1	1,500	5,000	8,600
Studio 2	1,100	4,000	6,500
Studio 3	1,300	4,500	7,200
Recording Studio	300	1,000	1,500

All venue hire requests are subject to curation and the management's decision on classification of the event is final.

Additional Manpower

Manpower	Base rate per show / event on performance / event day <i>*minimum four (4) hours call-out time</i>	Rate per hour (per person)	
		8:00 a.m. - 11:59 p.m.	Overtime (12:00 a.m. - 7:59 a.m.)
Technician	100	25	50

*All manpower to be approved by PJPAC Management and subject to availability.

* Price stated in Ringgit Malaysia (RM)

Additional Equipment

Item	Day Rate	4 Days Rate	7 Days Rate
500mbps WiFi / LAN Internet	100	300	600
Rostrum	200		
Additional hours / Overtime	Per Hour		
Air Conditioning	100		

* Price stated in Ringgit Malaysia (RM)

Additional Fees

- Additional manpower are available for hire when Hirer's requirements exceed those provided as part of the Venue Hire and are chargeable according to the published rate.
- Surcharge applies for manpower requested on Public Holidays.
- Additional equipment are available upon the request of the Hirer and are chargeable according to the published rates.
- Hirer is required to engage PJPAC's preferred caterer for their hospitality requirements.
- Additional 15% charge on the total Venue Hire Fee may be added if Hirer conducts Live Stream / Recording with audience present during the Venue Hire Period.

These rates are effective as of 1 January 2023. Bandar Utama City Centre Sdn Bhd reserves the right to amend the above rates without prior notice.



**PERFORMING
ARTS
CENTRE**

Corporate Rate

1NCUBATOR RATE CARD



Studio 1



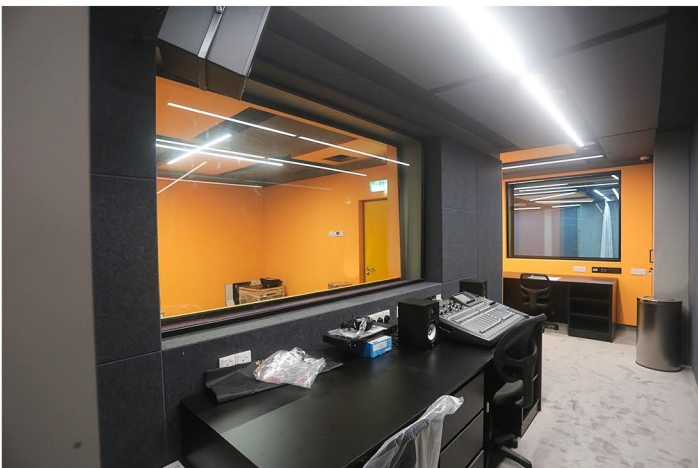
Studio 2



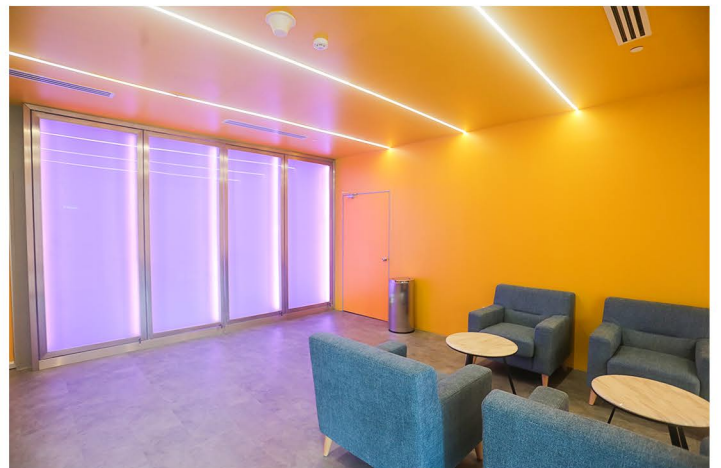
Studio 3



Recording Studio



Recording Suite



1ncubator Lounge